

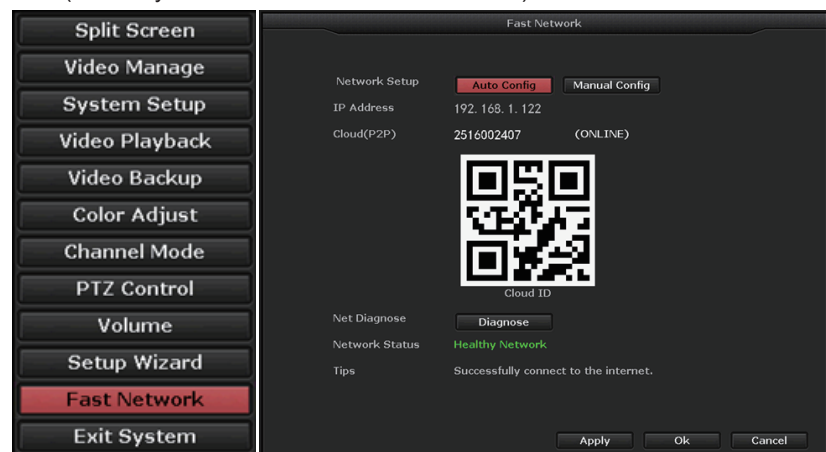
HD HVR RECORDER USER MANUAL

V2.3.7.1

Tips:User manual and more software(include CMS), please go to <http://www.dvr163.com/help/download.php> to download

1 / Fast Network

Step 1: Right click mouse in main menu →fast network→Choose Auto Config→Click OK If want to manual config, input IP address, click diagnose. If shows healthy network, indicates the connection of Internet is good. If shows network anomaly, plz process according to the clew.(Ensure your device has accessed network)



2 / Channel Mode (DVR mode, mixed mode, NVR mode)

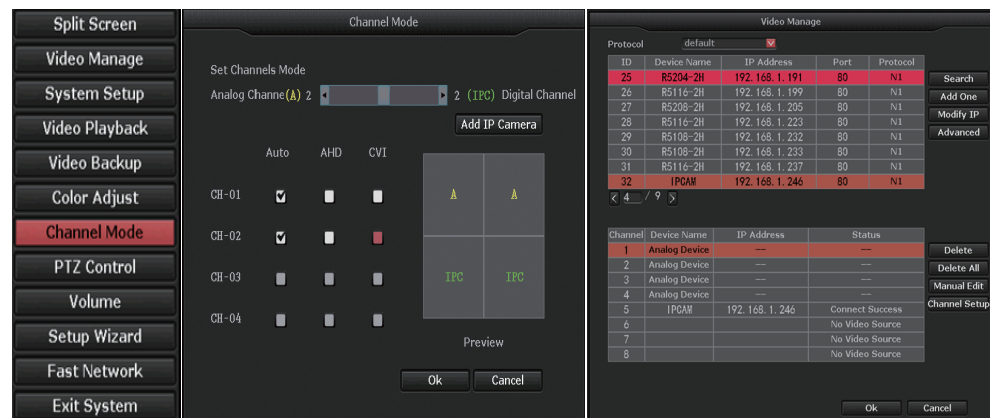
Step 1: Right click on "channel mode".

Step 2: According to the demand to choose the corresponding channel model, There are DVR model by default, through the mouse scrollbar to set the number of analog cameras and digital cameras, after finishing Settings, click ok to save.

Tips: Channel mode default set is DVR mode, can't click channel mode of add camera to enter, need set the number of the IPC channel, then can click enter after restart.

Analog channel defaults set is automatic mode, can automatically identify analog and HD AHD, TVI cameras, if connect AHD cameras can't identify, can be manually set to AHD mode of the channel.

If connect CVI camera, must set to CVI mode manually because it can't detect CVI automatically.

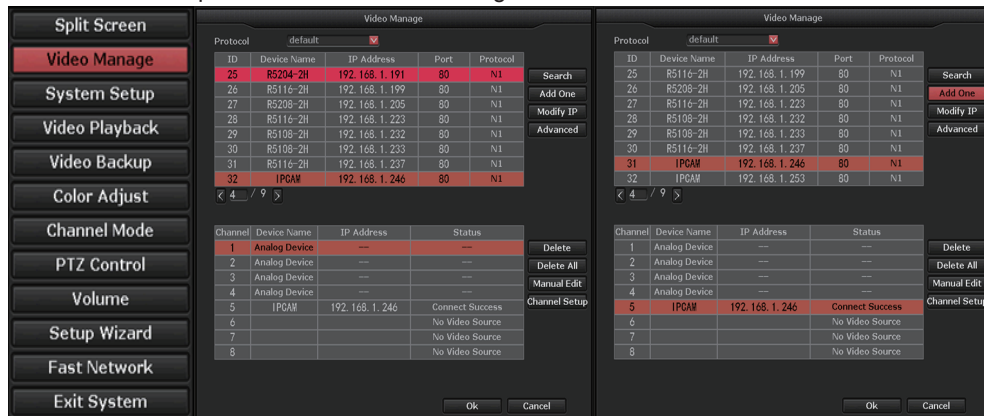


3 / Video Manage

Step 1: Right click on "video manage".

Step 2: Click "Refresh", there will be the IPCs for adding.

Step 3: Use mouse to select the corresponding IP camera, then double click the mouse or click "add" to complete the IPC channel adding.



4 / Video Playback

Steps: Right click mouse in main menu→Video playback→choose date, channel, record mode→click Search→then can view playback file.

Warm prompt:

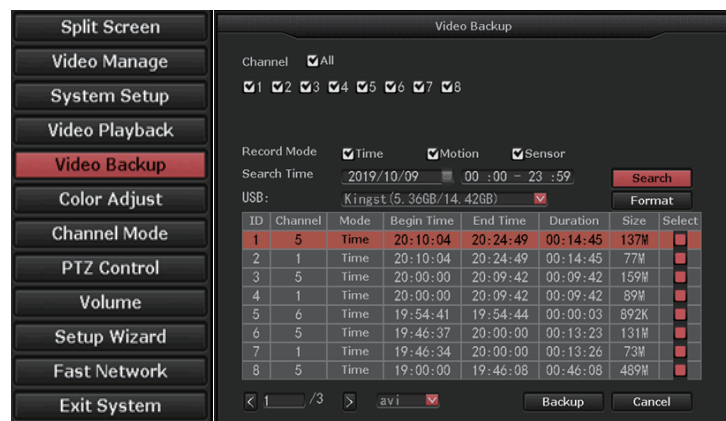
1. Illustration for playback button: play, pause, fast forward x2, x4, x8.
2. Play file: Choose the recording file in file list, as number "1" shown in picture. Choose one of the recording, click "play" to play to recording file;
3. Video backup: Choose the recording file in file list, as number "1" shown in picture. Insert the U flash disk, click "video backup" to backup the file;
4. Timeline: click "date" and "time" at left bottom to check the timeline of recording, show number "2" shown in picture;
5. On the timeline with recording file, left click the mouse, then can playback the file.



5 / Video Backup

Steps: Right click mouse in main menu → click Video backup → choose channel → choose recording mode → setup the "searching time", → click search, recording will come out → choose the video which need to backup →click Video backup.

Tips: Support 32G flash disk backup in max.

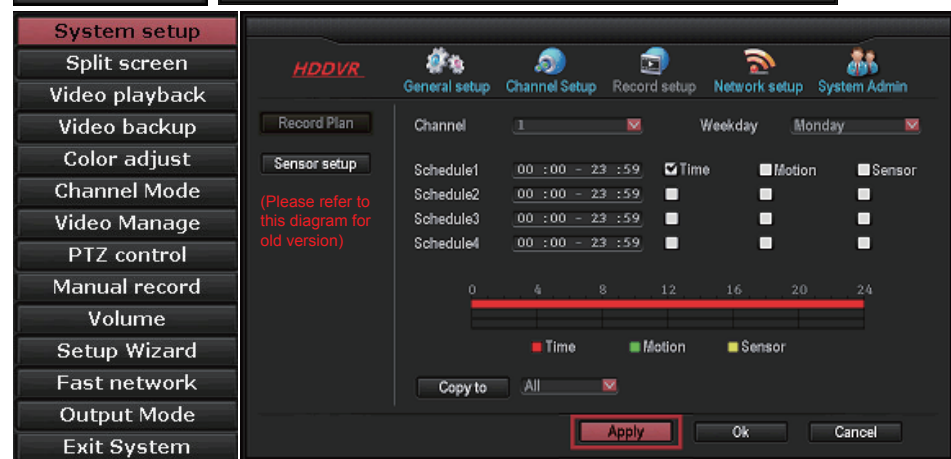


6 / Record Setup

Recording video is very easy on surveillance system.

Timing Recording: Setup recording time range: Right click mouse →System setup →Recording setup→Recording plan . Click Reset Button (For example "1" as picture shows), After come into Reset Interface→Click Timing Button (For example "2" as pictures shows) , And put mouse icon on the upper left corner (For example " (1) " as pictures shows) , Press and drag the mouse to the right to choose the time , Then list will turn to red color , Press "Apply" Button , Then setup successfully.

Alarm Recording: Set up recording time arange , Right click mouse→System setup →Record setup→Record plan. Click Reset button (For example "1" as picture shows) , After come into Reset Interface→Click alarm Button (For example "2" as pictures shows) , And put mouse icon on the upper left corner (For example " (3) " as pictures shows) , Press and drag the mouse to the right to choose the time , Then list will turn to yellow color , Press "Apply" Button , Then Alarm recording successfully .



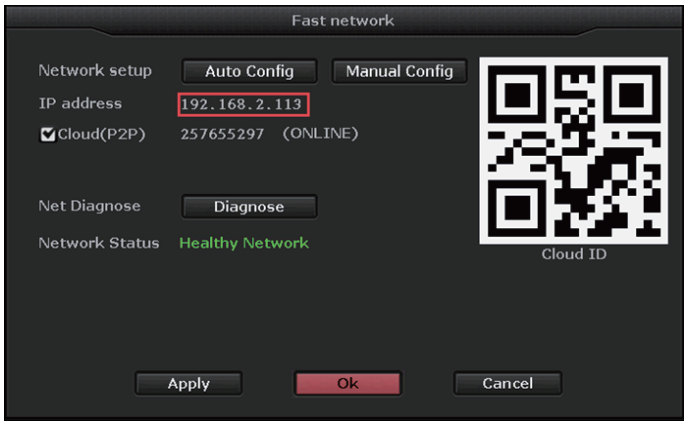
Motion Recording: Step 1: Setup recording time range. Right click mouse →System setup →Recording setup→Recording plan. Click Reset Button (For example "1" as picture shows), After come into Reset Interface-Click Motion Button (For example "2" as pictures shows) , And put mouse icon on the upper left corner (For example " (2) " as pictures shows) , Press and drag the mouse to the right to choose the time , Then list will turn to green color , Press "Apply" Button , Then setup successfully.

Step 2 : Choose Channel setup →Video detection →Choose Sensitivity as you want →Detection type change into Motion →check Buzzer , Alarm , Email Notification , App Alarm notification etc →Set up the protection time →Click Copy to →Click Ok .

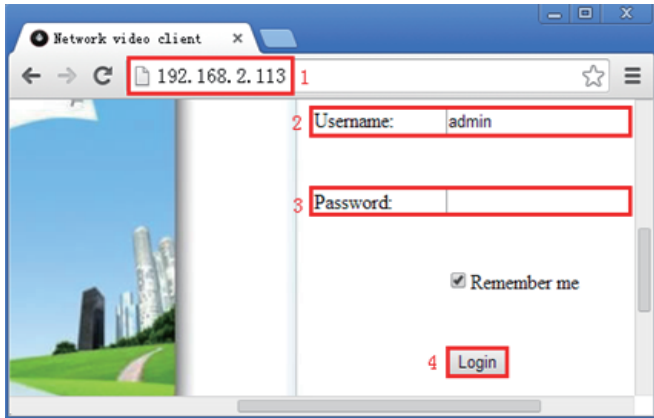
Note : User can set up any period of the time they want , for example 0:00:00--23:59:59, That is 24 hours *7 days recording , When NVR detects hard disk the default setting will be 24 hours *7 days recording , Red color means Timing recording , Green color means motion recording , Yellow color means Alarm recording.

7 Access In LAN

Step 1: Right click mouse in main menu → fast network → Check DVR IP address and save it.

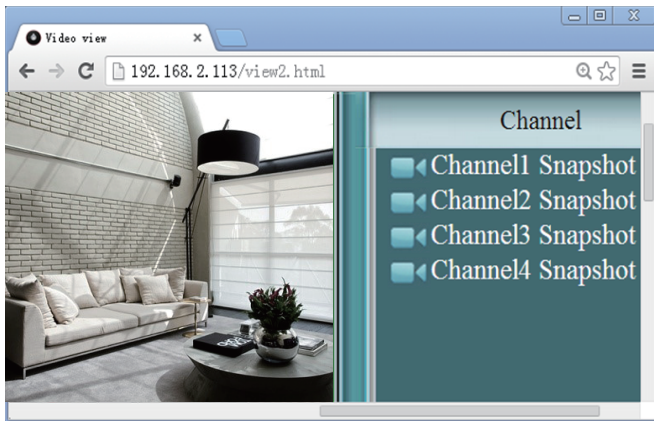


Step 2: Access by computer in LAN, input DVR IP address and Port(no need to input when its 80),access website which build in DVR, log in by username and password.



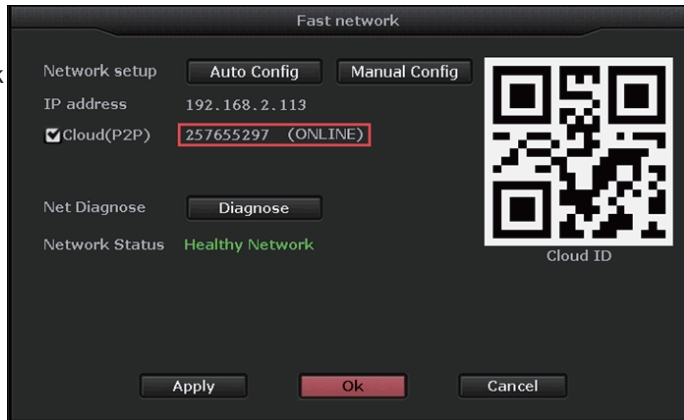
Step 3: Once access successfully, you can get video.

Tips: Please make sure DVR and computer in same network segment.

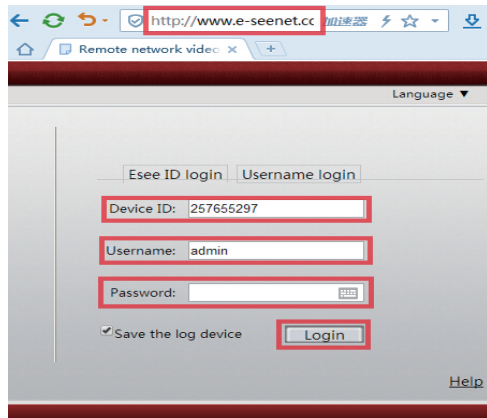


8 Access In WAN (Access by computer which is in different router with DVR)

Step 1: Right click mouse in main menu→fast network →Check Esee ID and save it.



Step 2: Open the IE browser, enter the www.e-seenet.com/help/download.php in the address bar. and input Esee ID, user name and password, then log in and check video.



Step 3: Once access successfully, you can get video.

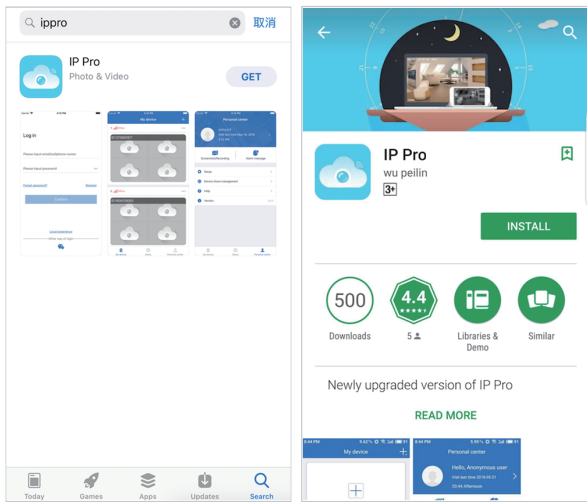
Tips: Video quality and fluency depend on upload speed of DVR and download speed of computer, each channel need above 30kbyte/s.



9 Mobile application download and installation

No.1: Go to <http://www.dvr163.com/download/indexm.php?p=ippro> in mobile browser, enter download page, click install to download and install APP.

No.2: Please scan the QR code in manual to download APP.



APP Store

Google play APP



APP download

Note: For IOS system, it requires IOS 8.0 version or above. For Android, Android 4.4 or above.

10 Esee mobile application(IP PRO)-Add device

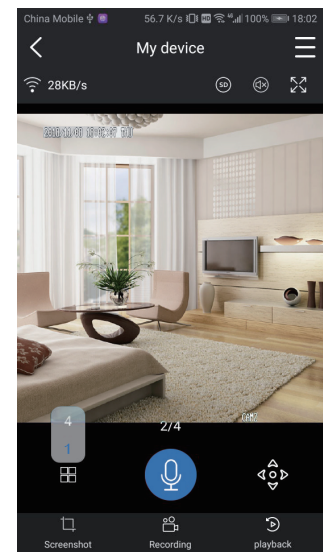
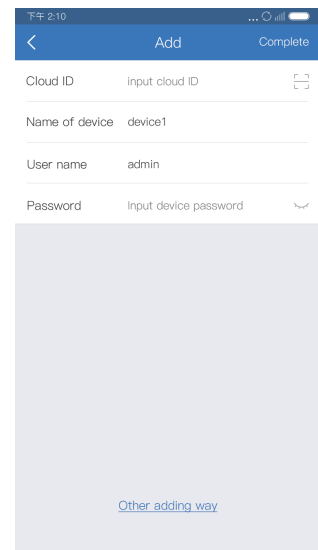
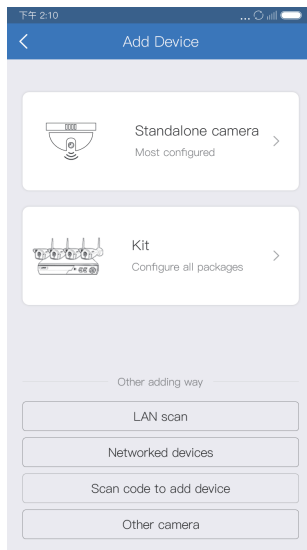
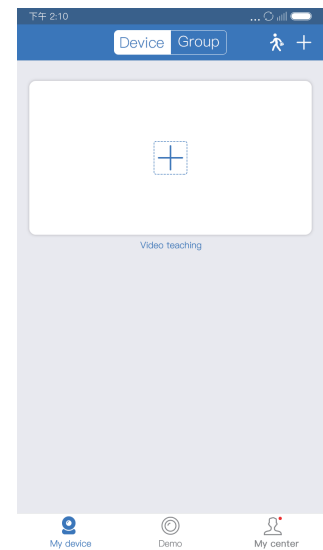
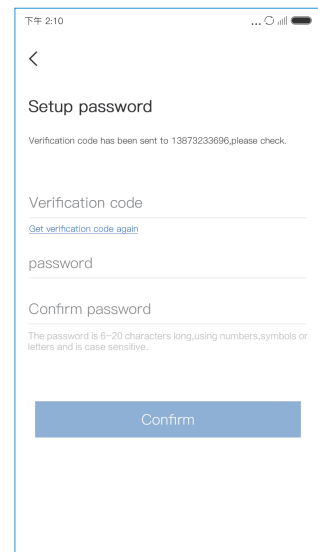
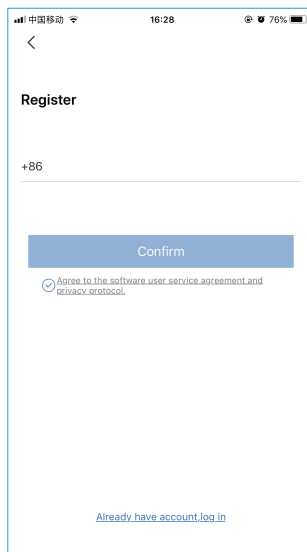
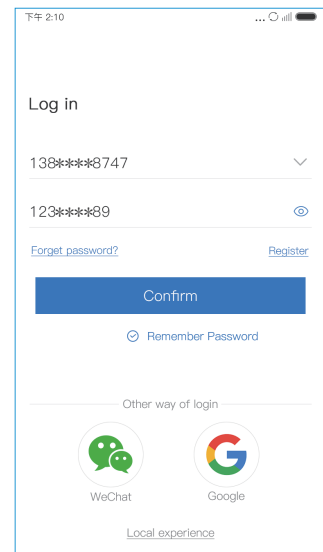
Step 1: Register

Step 2: Enter device interface

Step 3: Add device

Step 4: Added successfully. Click channel No.to get video

Step 5: Remote playback



Note: Each cellphone number/email address can be used for registration one time.